

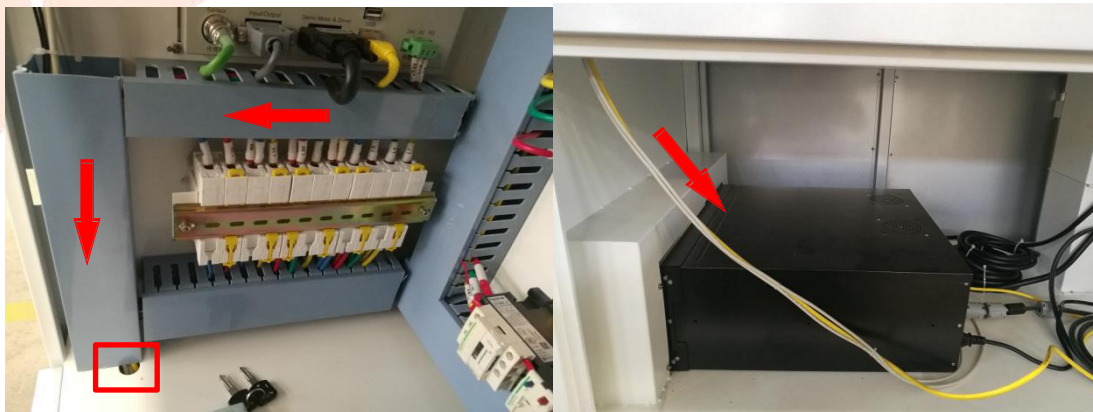


Solutions for “network connection time out”

- 1、 Check if the computer connected to network
- 2、 Check if the reticle of BCS100 is connected



The direction of reticle



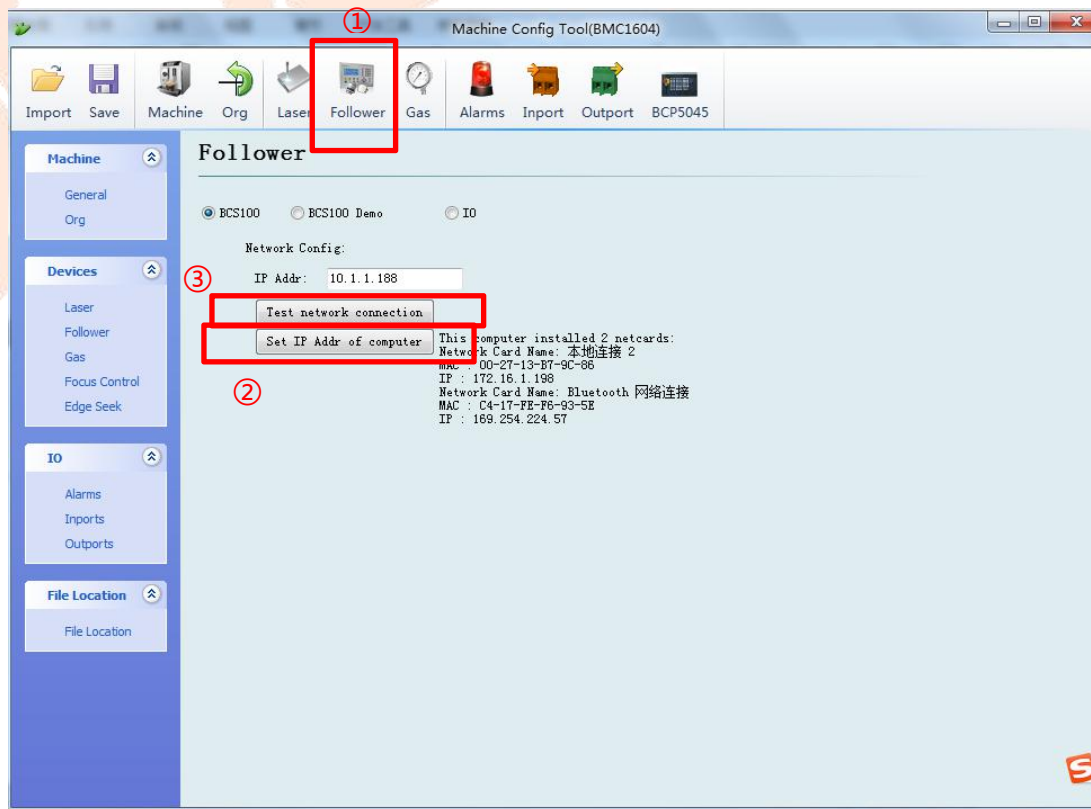


3、 Set the IP address of BCS100

The local connection IP address and BCS100 IP address need to be at the same segment (10.1.1.XXX) and not repeat

Solution 1 :

Open Config Tool | 平台配置工具 , click①, enter IP address, then click②③.

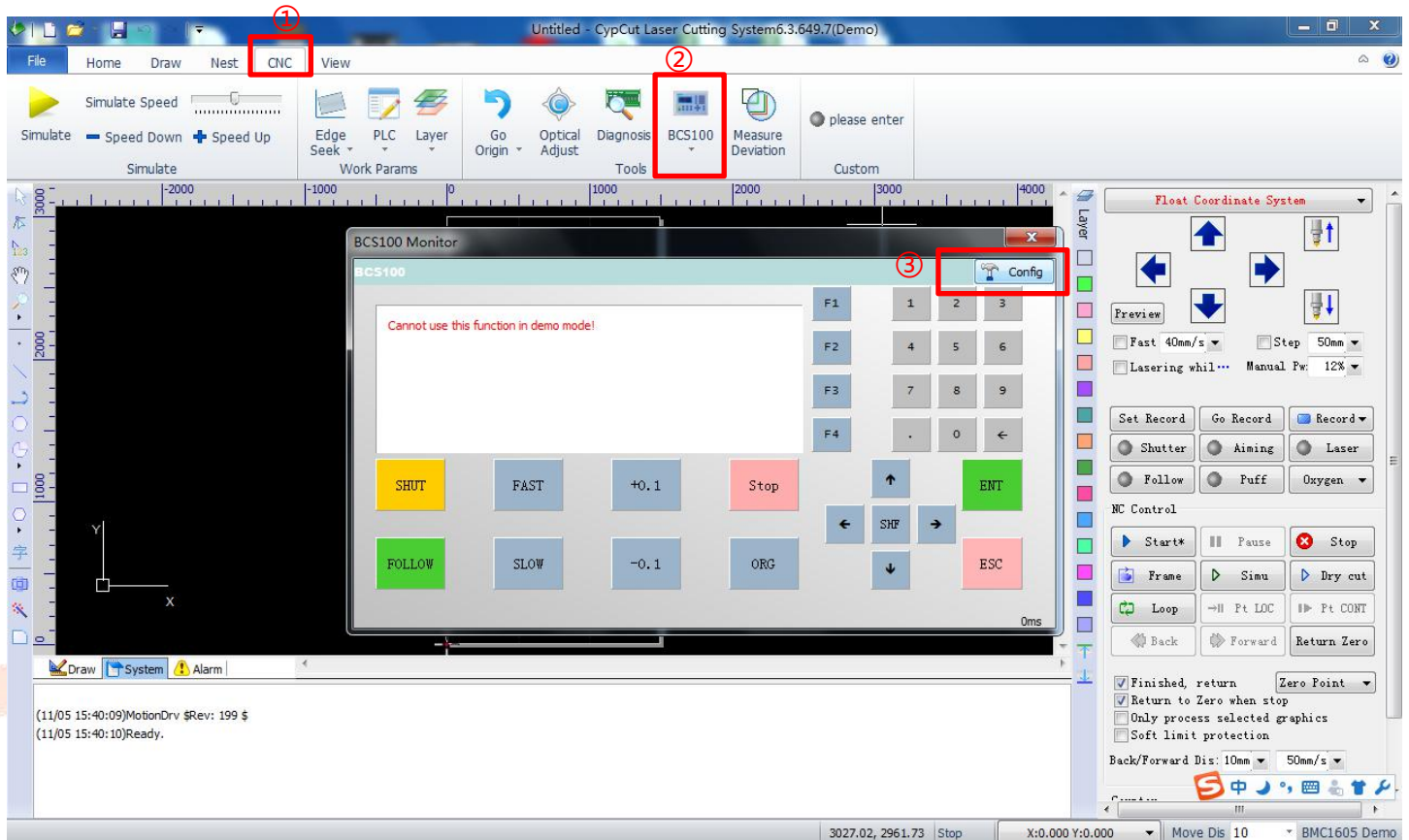




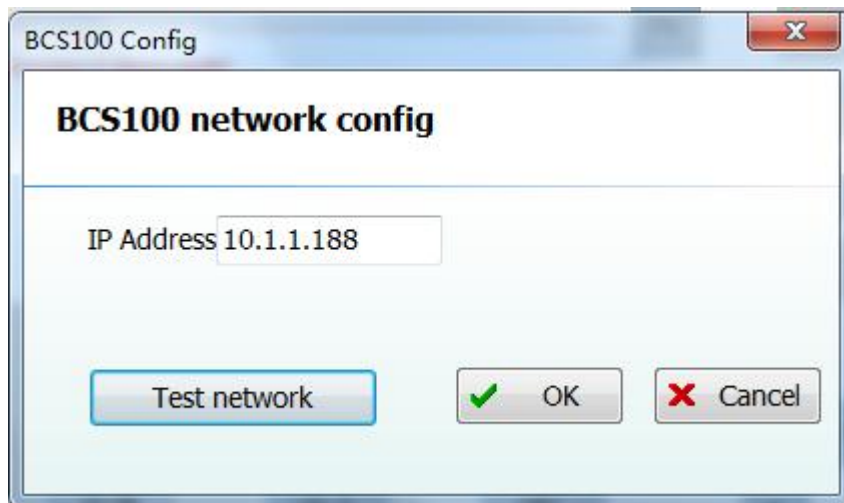
Solution 2 :



Open the software **CypCut6.3** , do the steps as shown below:



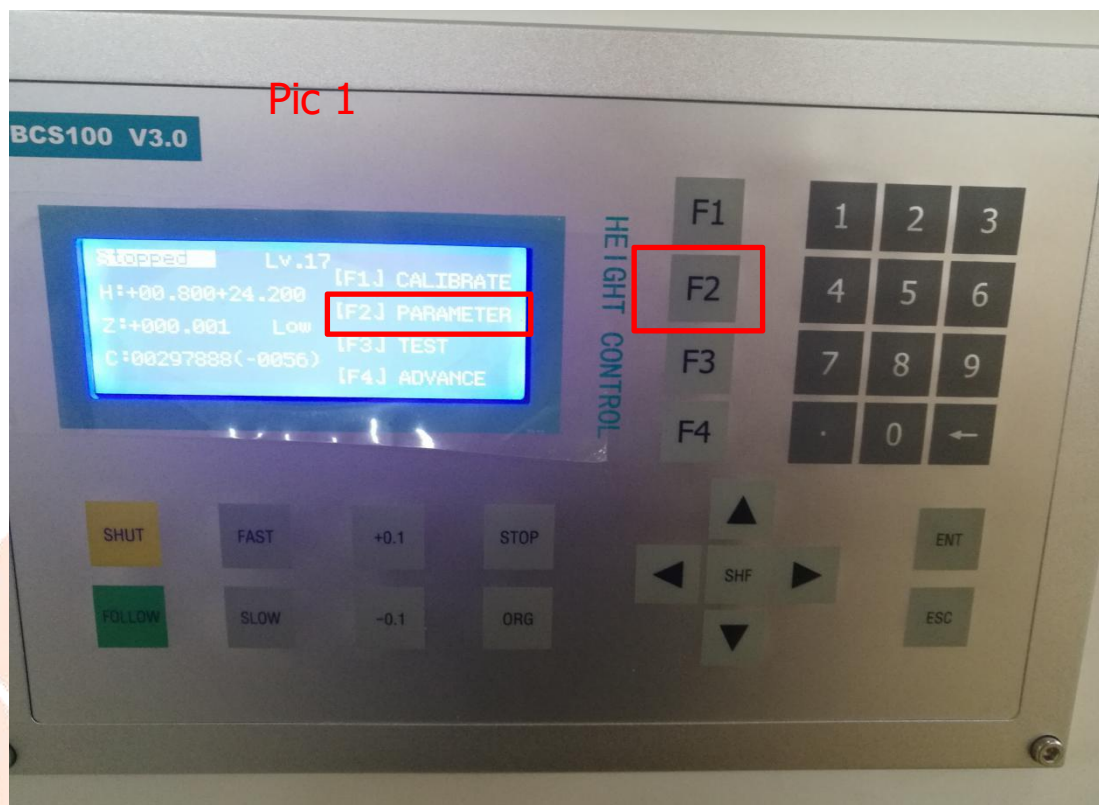
Enter IP address 10.1.1.188 and test network connection (010.001.001.188 this format will not work)





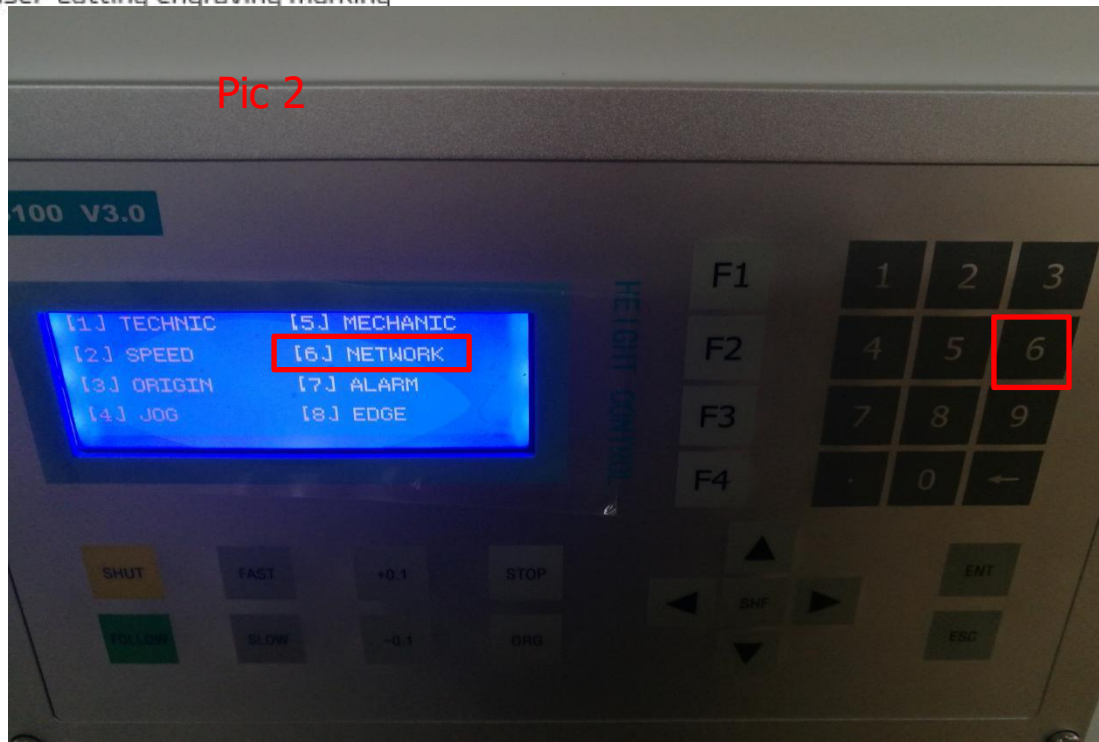
Solution 3 :

- ①as shown in pic 1 , press F2 enter parameter setting interface
- ②as shown in pic 2, press 6 enter network setting interface
- ③as shown in pic 3 , set IP address as 10.1.1.188 , choose F1(on), save





Pic 2



Pic 3

